

MASHA ARCHER DESIGN STUDIO



THE CONSERVATORY #3
San Francisco Series
BB-V4K \$4675.00



24 karat gold over a silver plated copper crescent incised with traditional stamping and scoring motifs, featuring a blossom at the center—Hilltribe work of Northern Thailand. Lead free pewter (30% silver) scored small cones, textured rondelles (in nape section), star and flowers stamped brass toned discs and hammered 'leaf' twists—all from India. Lavender and rose opalite milk-glass faceted drops—China. Gold plated copper small ellipsoids—from Ethiopia. Pale green and yellow cored clear vintage glass millefiore style rounds and ellipsoids—from China, circa 1950. Eight strand nape section of vintage lime green glass ellipsoids and white swirled drops—Czechoslovakia. Plated furnishings and two sisters pocket watch clasp—USA.

MASHA ARCHER DESIGN STUDIO

BB-V4K

Masha



MASHA ARCHER DESIGN STUDIO

BB-V4K



san francisco • 415.861.8157 • www.masha.org

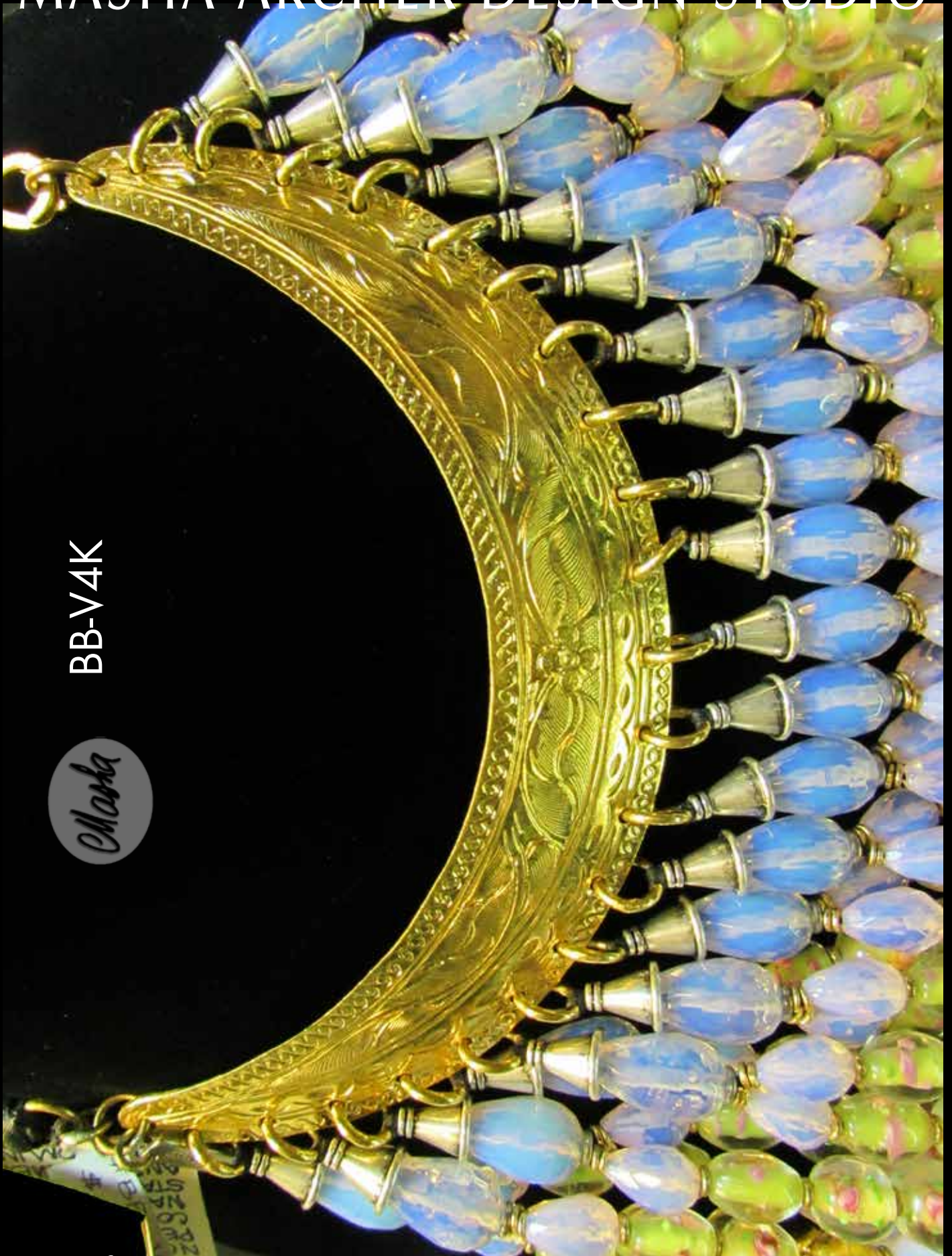
MASHA ARCHER DESIGN STUDIO



BB-V4K



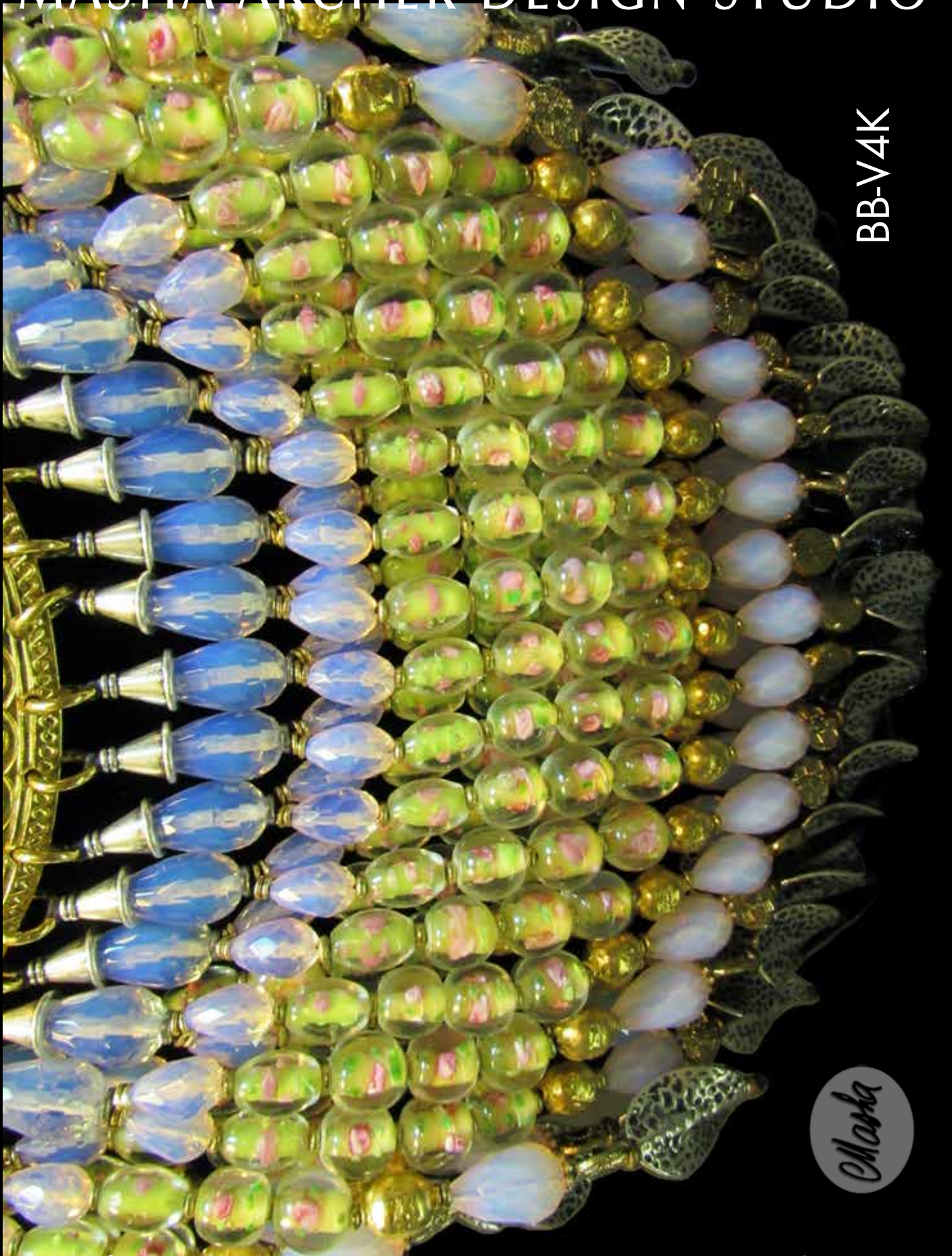
MASHA ARCHER DESIGN STUDIO



BB-V4K



MASHA ARCHER DESIGN STUDIO



BB-V4K



san francisco • 415.861.8157 • www.masha.org

MASHA ARCHER DESIGN STUDIO



BB-V4K



MASHA ARCHER DESIGN STUDIO



Masha

BB-V4K

san francisco • 415.861.8157 • www.masha.org

MASHA ARCHER DESIGN STUDIO

BB-V4K



MASHA ARCHER DESIGN STUDIO

BB-V4K



san francisco • 415.861.8157 • www.masha.org

MASHA ARCHER DESIGN STUDIO



Masha

BB-V4K

MASHA ARCHER DESIGN STUDIO



BB-V4K



san francisco • 415.861.8157 • www.masha.org

MASHA ARCHER DESIGN STUDIO



BB-V4K