

MASHA ARCHER DESIGN STUDIO



BLUE LAMP WREATH #6
WGL-42A \$875.00

Short single strand neck ring of nine lamp wound beads; these are handmade glass wound from canes heated at lamps and then further decorated, Venetian style; from China. Finished with hammered sterling rounds, Hill-tribe work of northern Thailand.

Furnishings and two sisters clasp made in USA.
Coin: Two Koruny, 2004, Czech Republic



MASHA ARCHER DESIGN STUDIO

WGL-42A



MASHA ARCHER DESIGN STUDIO

WGL-42A



Masha

MASHA ARCHER DESIGN STUDIO

WGL-42A



MASHA ARCHER DESIGN STUDIO

WGL-42A



MASHA ARCHER DESIGN STUDIO

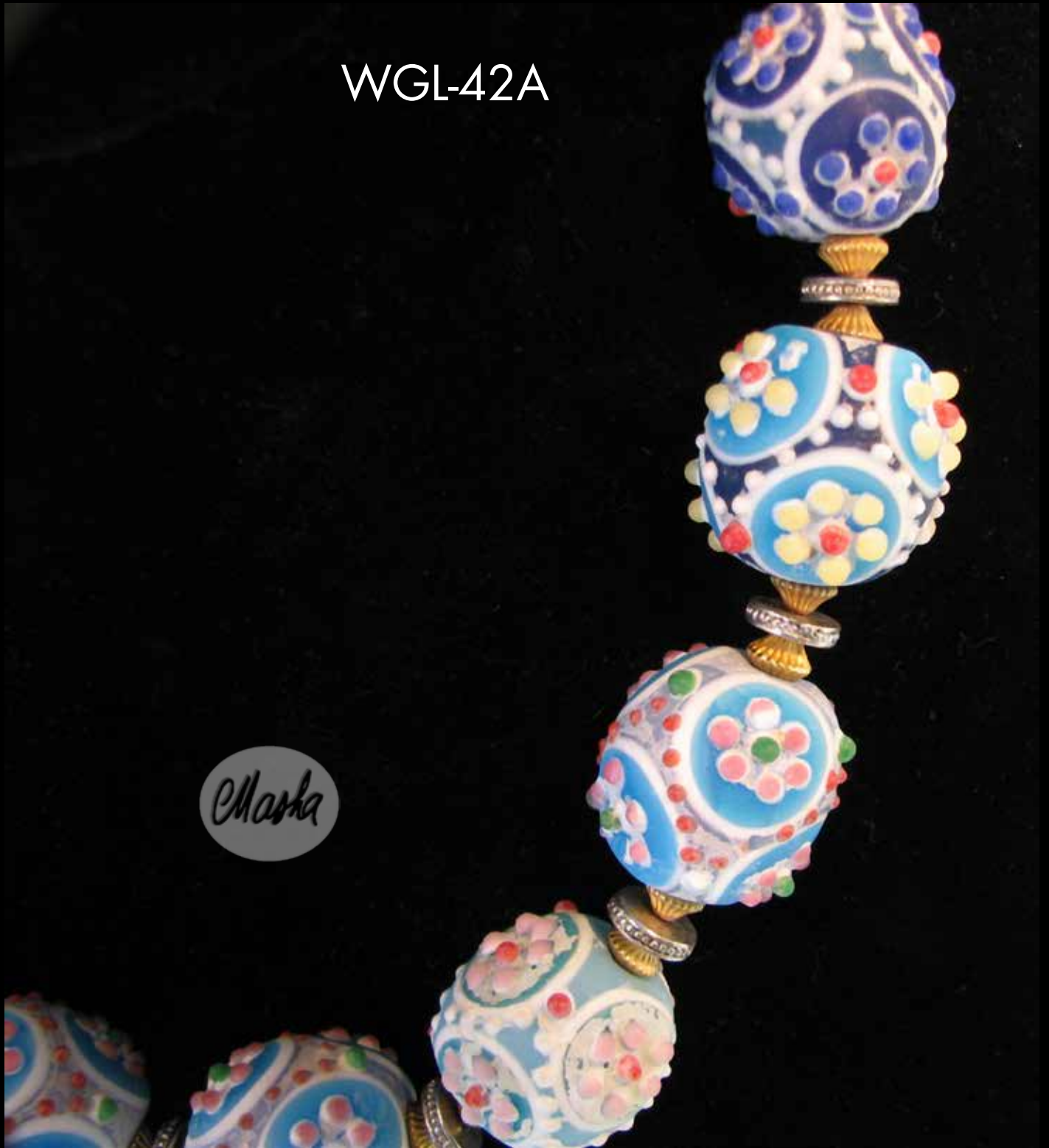
WGL-42A



Masha

MASHA ARCHER DESIGN STUDIO

WGL-42A



MASHA ARCHER DESIGN STUDIO



WGL-42A

MASHA ARCHER DESIGN STUDIO

WGL-42A



Masha

san francisco • 415.861.8157 • www.masha.org

MASHA ARCHER DESIGN STUDIO



WGL-42A

MASHA ARCHER DESIGN STUDIO

